

Note: the following pages are from brochures only pertaining to the appropriate vehicle. This is not a complete brochure.



Century Wagons

The two vehicles presented here are for people who want the luxury of a Century and the convenience of a station wagon. 7.8 cubic feet of passenger, to be exact, with the rear seat folded down.

Thoughtfully, the Century Station Wagon is the answer to both needs. And the Century Estate Wagon is even more so, with a higher level of luxury.

Both Century Wagons offer most of the equipment, interior, and options found on Century Sedans. Among the standard items: a 3.8 liter V-6, automatic transmission, power steering and locks.

The Century Wagons stretch out room, just has to be seen and used. The Century Estate Wagon's pushback front seat is a new. Moves cloth brings more elegance to the interior. Or, you can order a Century Wagon with an all-steel bench front seat, interior and bring the cost of owning Century even lower.

Hardly anyone buys other Century Wagons without loading it with the wagon options available. And they include, among other things, an available trailer-towing package rated for 4,000 lbs. trailers using the standard 3.8 liter V-6 engine.

Of course, for pure creature comforts, order either manual or automatic air conditioning. Choose one of three new available Delco-ETM radio/cassette units, and specify a new-look metal antenna for improved fringe area reception.

The Century Wagons embody fundamentally sound, truck ideas about station wagons. They've been popular choices for years. We think 1981 models will continue to be as popular.

Century Wagon GLE and Century Estate Wagon

▲ Side frame jack ▲ Available Cruise-Master speed control with resume speed feature ▲ Auto-brake, Cruise Control or combination Delco-cassette tape player with AM/FM stereo radio, both

Century Wagon	GLE	Estate
Standard	1	1
Options	2	2
Price	1	1
Availability	1	1

1-availability 2-optional
*Cable Price, with new optional

Wildcat



Wildcat Coupe



Wildcat Sedan

Electra



Electra Limited Coupe



Electra Limited Sedan



Electra Park Avenue Coupe



Electra Park Avenue Sedan

LeSabre/Electra Estate Wagons



LeSabre Estate Wagon



Electra Estate Wagon

LeSabre



LeSabre Coupe



LeSabre 1 ton Package



LeSabre Sedan



LeSabre Limited Coupe



LeSabre Limited Sedan

Century



Century Sedan



Century Limited Sedan

Century Wagons



Century Wagon



Century Estate Wagon

Regal



Regal Coupe



Regal Sport Coupe



Regal Limited Coupe

Skylark



Skylark Coupe



Skylark Sedan



Skylark Sport Coupe



Skylark Sport Sedan



Skylark Limited Coupe



Skylark Limited Sedan

The 1981 Buick Buyer's Guide

The next few pages are devoted to some of the things we think are pretty impressive about our 1981 Buicks. You'll be able to explore front-wheel drive with us in some detail. We've taken apart one particularly interesting feature—the new Buick windshield washer. We think you'll find a washer system that uses no moving parts intriguing...we did. And, you'll see some of our high-technology advances, as well. Some are standard, like the Computer Command Control system (except on available diesel engines). Others are available, like Buick's Touch Climate Control and Cruise-Master speed control that resumes your preset speed. All of them represent Buick's continuing desire to bring the latest in comfort, convenience, and yes, prestige to you, the Buick customer.

Front-wheel drive.

Helping by the way the industry in designing cars with front-wheel drive, we think we've been on to a pretty good thing for some time now.

Both Regals and Skylarks are front-wheel-drive vehicles. Both offer impressive features in front-wheel drive. And for good reason. First, the mass that represents the engine and transmission is concentrated directly over the driving wheels.

Secondly, the wheels that do the driving also do the steering. Both facts result in a firm feeling behind the wheel.

Another benefit, not to be overlooked in this design, is greater interior room, an example of engine placement. Even with short, compact interiors, interior leg room remains impressive.

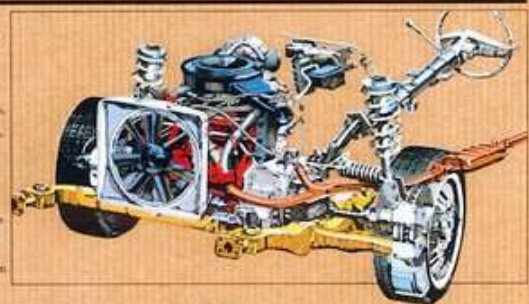
The new automatic transmission with overdrive.

That's right, an automatic with overdrive. It's a brand-new fully automatic transmission that is standard (depending on engine selection) in all Electras and the LeSabre Estate Wagon, available in LeSabre Coupes and Sedans. It functions in the same manner as other automatics, with one important exception. At about 45 mph, the transmission automatically shifts into an overdrive fourth gear. Regular automatics have a direct drive, or

A computer clutch for your other, non-overhead-drive automatics.

Actually, this unit was introduced during 1980 on selected models. This year, it's in every overdrive automatic, and it's on third and fourth gears of our new automatic transmission with overdrive. A special damper in the clutch assembly enhances drivability and performance.

Then the clutch plate in the automatic benefits from advanced development. They're called, "one-piece" clutch plates. They groove on the plates, allow transmission



New self-sealing tire.

Here's a new available tire that stands up to nails. It's up to 3/16" thick that is, which is by no means a fully safe.

A special puncture-sealing material, from the inside of the tire tread and 45° from the tire's tread left by nails when they're removed. In most cases, there's no emergency flat. These tires, like the standard tires, are of Low-rolling resistance design.



Self-sealing tires are available on all 1981 Buick models except Skylark Sport models, Regal Sport Coupe, and Buick T Type, which feature special sizes of tires. Consider them extra peace of mind.

A windshield washer with no moving parts.

None of all, other than the washer pump. If you've ever seen a garden hose flopping around when water is pouring out of it, that gives you a good idea of the way the new Buick windshield washer system works.

Each wheel washer unit is about half an inch wide and an inch long. Inside are specially constructed chambers. As washer fluid is pumped in, the chamber design causes the fluid to change direction very rapidly, brush like that garden hose! That is fluid on left, turn right, then left again, at the rate of about 100 such cycles per second. To simplify, the spray appears as a fan of fluid on the windshield.

You'll find the new Buick system on Century, Regal, and Wildcat.

A caliper we call "low-drag."

A special piston seal in the front disc brake caliper acts as a return spring and pulls the brake pads away from the rotor, helping to eliminate drag. They're standard on Skylark, LeSabre, and Electra.

Give Skylark's sound a real boost.

If you are deeply involved in home stereo, you probably know about graphic equalizers, and their purpose. Now you can order one with several stereo racks in a Skylark, and get an added power boost, as well.

Notice that, in place of ordinary rear control dials, there are five tone control sliders. They give 12 dB control over the segments of the audio range, centered at 60 Hz, 250 Hz, 1000 Hz, 3000 Hz and 12000 Hz. By arranging them in a way that suits your listening preference, the sliders give a pictorial representation of what you're listening to. Hence, the term—graphic. You can make deep bass sounds punchier. Bump up the mids, highs, or take them into the background. Make voices more, or less, dominant. And give the horns or extreme highs an 80 angle as much, or as little, as you prefer.

There are five power lights that flash when the booster section delivers more power. And a slider

control lets you adjust the volume between two sets of speakers. The Delco Graphic Equalizer features Amplifier for more sound enrichment and a give you more presence in 1981 Skylarks.

Fixed-front antenna.

In many metropolitan areas, drive and more tall buildings and increasing numbers of radio stations have made getting and holding the station you want increasingly difficult. If this slight scratch is for limited reception, offer a fixed-front antenna with many radios on Century and Regal, and launch it as standard equipment on Skylark. This may not specify the windshield antenna, it's on the available list.

The fixed-front antenna is the best average height for FM reception, and also serves the AM band well. It's not, however, for use with CB sets.

Serious Highway stereo.



The Concert Sound speaker system, introduced on last year's Elctra Park Avenue Sedan, is still able on all Elctra Coupes and Sedans, and on all Skylark. And if you're serious about your highway stereo, you'll want to read on.

The premium-quality system can be ordered with either our Deluxe Full feature or 128 (Electronically Tamed Resonant) units, and it goes on as a separate option in all 1981 Buick models and coupes. It doesn't matter if your system runs on rock, dash, classical, or any listening. You'll love what Extended Range speakers do to what you hear.

Another 4" x 6" speaker is mounted in each of the rear doors for rear speaker (and) And two Extended Range speakers are mounted in the rear-trunk floor panel. Six speakers in all.

The results are truly fantastic. Every passenger hears good stereo. Standard Range speakers are included with 128 units and may be ordered as a separate option in all 1981 Buick models and coupes. It doesn't matter if your system runs on rock, dash, classical, or any listening. You'll love what Extended Range speakers do to what you hear.

A novel Electronic Touch Climate Control air conditioning.

Electronic says it all instead of conventional controls, that just presents two buttons/switch control surfaces. And inside them, the light-emitting diodes (LEDs) confirm your selection.

Now the top row is the Blotter™ temperature range is displayed from 60 to 80 degrees F, in 2.5-degree increments. The lower row displays functions. Choose auto, manual, or hold.

defrost, or whenever the situation requires. Touch the appropriate function surface and temperature surface, and ready.

Finally, the unit does your bidding. When the temperature you've selected is reached, the unit shows that down while it maintains the temperature. You can lower the fan in high gear by touching "High Fan," if you desire.

Electronic Touch Climate Control air conditioning is available in all Elctra, Elctra and Plaza models.



The Trip Monitor is a little bit of electronic know-how.



The Trip Monitor, available in Phoenix, is an on-board microprocessor that's programmed to accept your data input. You can give it information by key length, and touch the appropriate buttons and it will give you back an incredible amount of information: average speed, estimated time of arrival, remaining miles, time of day, and speed. The Trip Monitor

displays all information on a digital readout.

It can be rightly called an information module, as well as a display engine temperature, fuel remaining, and more. Not only is your speed digitally displayed, you can control all machines to reset and lock, by flipping one switch. It's truly remarkable.

Boosts speed of the Back of a switch.

Cruise Master speed control, long a feature with Buick owners, is offered with a new feature—a remote speed switch. With it, you set your desired speed as before. Then, even if driving conditions require a series of slowing and accelerating maneuvers, you can resume your original preset speed by merely engaging the switch labeled "resume" when conditions permit. The remote speed feature adds immensurably to highway convenience.

Roller towing and 1981 V-6 Buicks.

All of the vehicle and engine downsizing may have left you wondering if towing and V-6 engines would ever be compatible. If your trailer weighs no more than 4000 pounds, it can be. Because 1981 Buick Century, Regal, Elctra, and Elctra can be equipped with V-6 trailer-towing packages available in late October, 1980.

Century and Regal trailer-towing packages include the 1.8 ton V-6 with an automatic transmission

and a 3.23:1 axle ratio. They can pull up to 4000 lb. trailers. Elctra and Elctra (except wagon) get a 4.1 ton V-6 and a 3.23:1 axle ratio plus the new automatic transmission with overdrive. So equipped, they can pull up to a 4000 lb. trailer. Not only can you pull the trailer in third gear, you can enjoy the economy of fourth gear when you're not pulling the trailer.

If you're a towing fan, you already know the value of a firm

side and landing suspension, battery-charging, and high-output Delco-Remy generator—all included in the trailer-towing package. If you're new to towing, read and heed. We've prepared a special trailer towing pamphlet which is available at your Buick dealer's. Ask for it.

Just because cars and engines have been downsized is no reason to raise our on-towing fan. With many properly equipped Buick V-6 models, hitch up and go.

There's an impressive array of engines available for 1981 Buicks, including a four-cylinder, three different sizes of V-6, and V-6, including one that doesn't run on gasoline at all. We're referring, of course, to the available 5.7 liter diesel V-6, introduced last year on Elctra and Elctra. Now, the 1981 Buicks are available with the diesel V-6.

The engine family.

5.7 liter (351 CID) diesel V-6



Some good reasons why diesels are popular.

Improved fuel economy makes diesel power a very viable alternative. But there's another benefit that makes good sense on top gas use required, because there are no spark plugs, and there is no maintenance or adjustment.

To deal with starting in cold weather, a diesel V-6 is supplied with two batteries and special glow plugs.

Wider use for the 4.1 liter V-6.

Last year we introduced the 4.1 liter V-6 as the standard engine for Elctra Coupes and Sedans. It was also available in some Elctra models.

This year it is the standard powerplant in the Phoenix as well as Elctra. And it is available for the first time in the Buick T-Type, and coupe.

1.8 liter (111 CID) four-cylinder V-6

It's available in Elctra Sedan and Coupe. In 252 cubic-inch displacement makes it well suited to move Elctra, Elctra, or Elctra with smoothness and agility. You will find it very satisfying, and certainly in keeping with your demand for efficiency and response in both hill-size and personal luxury settings.

The turbocharged V-6.

Buick is known as "The Home of the Turbocharged V-6" because this engine first appeared in selected 1978 Buicks. It continues to be the standard offering in the Regal Sport Coupe. It is available in the Buick T-Type, and standard in Century, Regal, and Elctra in California.

Obviously, the turbocharged engine appears different because of

1.8 liter (111 CID) four-cylinder V-6



The V-6 Buicks.

Every Buick Sedan or Coupe can be ordered with a V-6 engine. In fact, except for Skylark, they're standard. These smooth, even-temper engines are available in a 2.5 liter size for Skylark, and 3.0 liter form, standard in Century, Regal, and Elctra. The 4.1 liter V-6 is the basic engine in both the Elctra and the luxury Buicks.

Their short, compact design

allows for installation in Elctra Sedan and Coupe. In 252 cubic-inch displacement makes it well suited to move Elctra, Elctra, or Elctra with smoothness and agility. You will find it very satisfying, and certainly in keeping with your demand for efficiency and response in both hill-size and personal luxury settings.

The turbocharged engine is equipped with an electronic "Turbo Control Center" to control spark, compressor for fuel mixture, atmospheric conditions, load, altitude, and other driving conditions. Clearly, this technology has made turbocharging practical, judging by the way other manufacturers are following suit. But you can drive an engine, now.

Elctra Sedan and Coupe can be ordered with a V-6 engine. In fact, except for Skylark, they're standard. These smooth, even-temper engines are available in a 2.5 liter size for Skylark, and 3.0 liter form, standard in Century, Regal, and Elctra. The 4.1 liter V-6 is the basic engine in both the Elctra and the luxury Buicks.

Their short, compact design

allows for installation in Elctra Sedan and Coupe. In 252 cubic-inch displacement makes it well suited to move Elctra, Elctra, or Elctra with smoothness and agility. You will find it very satisfying, and certainly in keeping with your demand for efficiency and response in both hill-size and personal luxury settings.

The turbocharged engine is equipped with an electronic "Turbo Control Center" to control spark, compressor for fuel mixture, atmospheric conditions, load, altitude, and other driving conditions. Clearly, this technology has made turbocharging practical, judging by the way other manufacturers are following suit. But you can drive an engine, now.

Elctra Sedan and Coupe can be ordered with a V-6 engine. In fact, except for Skylark, they're standard. These smooth, even-temper engines are available in a 2.5 liter size for Skylark, and 3.0 liter form, standard in Century, Regal, and Elctra. The 4.1 liter V-6 is the basic engine in both the Elctra and the luxury Buicks.

Their short, compact design

V-6 and Buicks.

We offer a range of available V-6 engines for people who want and need V-6 power. The 5.0 liter engine is standard in Elctra and Elctra Estate Wagon. This engine, along with a 4.3 liter V-6, is found in most other models except Skylark.

Little needs to be said for the V-6 engine, millions of them are in use. If you desire, the entire power of a V-6, then by all means, specify one.

Elctra Sedan and Coupe can be ordered with a V-6 engine. In fact, except for Skylark, they're standard. These smooth, even-temper engines are available in a 2.5 liter size for Skylark, and 3.0 liter form, standard in Century, Regal, and Elctra. The 4.1 liter V-6 is the basic engine in both the Elctra and the luxury Buicks.

Their short, compact design

Computer Command Control.

It means impressive economy and emission control.

Computer Command Control is the result of a lot of serious thinking about how to meet gasoline engine emissions standards and keep driving pleasant. You want a car that starts easily, runs smoothly, while the engine's working up, and delivers satisfying fuel economy.

For 12 years, the government has set vehicle emissions standards. To meet the latest standards, GM's specialists devised an electronic control system for carburetors, and a battery-sensing computer, which appeared on 1978 California Buicks. This practical application of electronics, to the problems of

emissions control and durability, appeared in a more refined form on selected 1980 Buicks.

Now, in 1981, you have Computer Command Control. It's built in a microprocessor, that controls add state components. They can be given instructions when they're built to respond to operating conditions. It's called sensor logic.

The onboard electronics unit is also used to diagnose itself. A flag means light on the instrument panel will flash a code to identify certain system problems, should they occur. The coded Buicks led a trend among technicians possible malfunctions.

The electronics even control computer clutch engagement in the automatic transmission on some

and the actual unit itself is in mid-world components. Adjustments are made automatically to optimize. The exhaust temperature, CO, water, nitrogen, and oxygen. Very few irregularities remain.

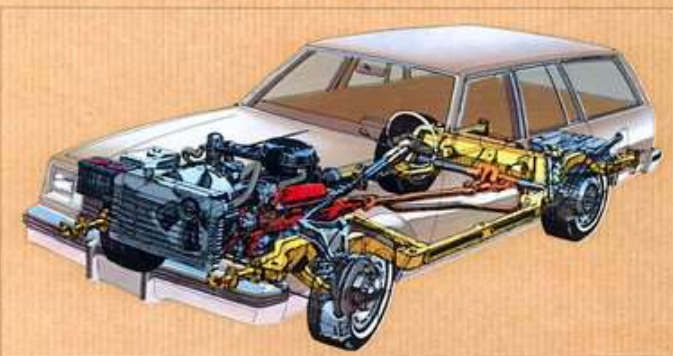
The onboard electronics unit is also used to diagnose itself. A flag means light on the instrument panel will flash a code to identify certain system problems, should they occur. The coded Buicks led a trend among technicians possible malfunctions.

The electronics even control computer clutch engagement in the automatic transmission on some

which does nothing.

All turbocharged Buicks, and all Elctra models with the 4.1 liter V-6, will use a second electronic module with instructions to adjust spark timing.

So Computer Command Control represents a triumph by the engineers over mid-world demands for emission control, good economy and durability, particularly in cold weather. Making this system work in the fall took more computer thinking. Making it practical for production cars represented a quantum leap in technology and its application—and you benefit.



Available Models

Century Station Wagon	455
Century Estate Wagon	455

Century Station Wagon/Century Estate Wagon Powertrains

Engine	Transmission
3.8 liter (231 CID)	Automatic (Optional)
2.5 liter, 5-cyl. (151 CID)	Automatic (Optional)
2.5 liter (151 CID)	Automatic (Optional)
2.0 liter, 4-cyl. (122 CID)	Automatic (Optional)

Power refers to the government engine output on the basis provided to your dealer with this printing.

Dimensions

Wheelbase	3,700 (108.3)
Overall length	4,546 (140.9)
Overall height	5,607 (171.0)
Overall width	6,096 (186.7)
Overall depth	4,807 (147.3)
Overall weight	4,678 (105.1)
Front suspension	
Overall width	619 (19.3)
Track width	5,086 (155.6)
Overall height	1,454 (44.5)
Overall weight	5,086 (155.6)
Rear suspension	
Overall width	619 (19.3)
Track width	5,086 (155.6)
Overall height	1,454 (44.5)
Overall weight	5,086 (155.6)
Overall height	1,454 (44.5)
Overall weight	5,086 (155.6)

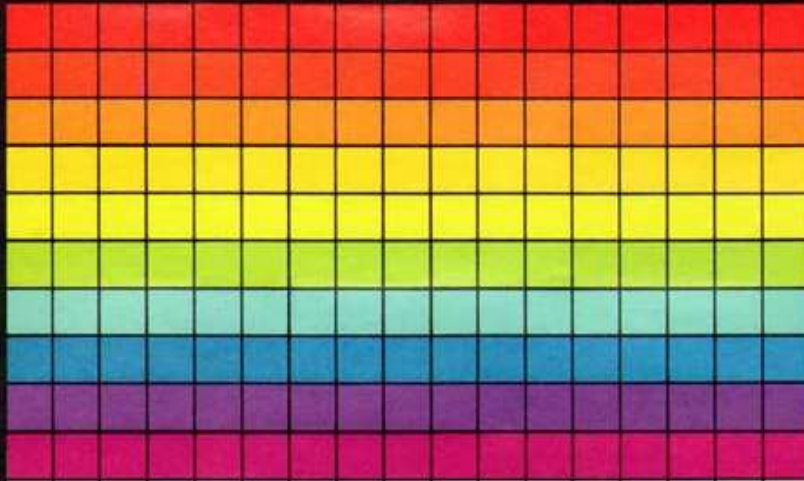
Standard Equipment

- Engine/Chassis**
- 3.8 liter (231 CID) 2.84L V-6
 - High-Energy Ignition
 - Computer Command Control
 - Power front disc rear drum brakes
 - Power steering
 - Automatic transmission
 - Cold-start suspension
 - Delco-Remy 31 Heavy maintenance-free battery
 - Forward-recessed steering gear and linkage
 - Computer-selected chassis springs
- Comfort and Convenience**
- Full perimeter frame
 - Flangeless bolted, radioly ply tires—P195/70R14
 - Low-rolling-resistance tires
 - Side-impact jock
 - Vinyl bench seat or cloth seat, vinyl rear interior trim (Century)
 - All-cloth or cloth front/rearback seat and vinyl rear seat or all-vinyl trim (Estate Wagon)
 - Windshield wiper system with wiper-wipe feature for rainy conditions
 - Left-side halogen and full-down halogen
 - Public windshield wiper system
 - Lighted door-ajar system (Century's front-ajar, under-dash parking brake and rear door-ajar doors, glove compartment (Estate Wagon))
 - Tailgate follow-up board (Estate Wagon)
 - Full foam seat construction
 - Power and rear door armrests
 - Compact spare tire
 - Continuous turn signal and high/low beam headlight control
 - Rear storage compartments
 - Bin-type glove box with coin holder
- Appearance and Protection**
- Bumper protective strips
 - Rear bumper guards
 - Depressed-pair windshield wipers
 - Inside hood lock release
 - Deluxe steering wheel
 - Lead floor area carpet (Estate Wagon)
 - Extensive anti-corrosion protection

Available Equipment

- Engine**
- Call-in assembly line engine equipment and timing (located in California)
 - Engine block heater
 - 45-amp. Delcotron generator
 - Heavy-duty engine and transmission cooling
- Chassis**
- Limited-slip differential
 - Automatic level control
 - Pan-ride and handling suspension
 - Flangeless bolted, radioly ply wheelend tires—P195/70R14
 - Steel-bolted, radioly ply, blacked steel tires—P195/70R14
 - Steel-bolted, radioly ply wheelend and white fillboard latched tires—P195/70R14
 - Self-sealing P195/70R14 tires
- Interior**
- 50/50 frontback seats—cloth or cloth with vinyl (Estate Wagon)
 - Bucket seat—cloth, vinyl or cloth with vinyl (Estate Wagon)
 - Gray power seat—driver's side
 - Gray power seat—passenger side (50/50 seats required)
 - Gray power seat—driver and passenger (50/50 seat required) (Estate Wagon)
 - Automatic air conditioner
 - Electric dual clock
 - Electric digital clock
 - Full-length operating console (bucket seats required)
 - Electric rear window defogger
 - Electric door locks
 - Rearview mirror lock
 - Self-sealing radioly ply wheelend tires—P195/70R14
 - Headlamp on indicator
 - Tip odometer
 - Instrument gauges—temperature, oil pressure and voltmeter
 - Door reading light
 - Brake light monitor
 - Engine compartment light
 - Remote control, outside window mirror—left hand
 - Remote control, outside window mirror—right hand
 - Outside, window sport mirrors—left-hand mirror, right-hand mirror
 - Outside, window sport mirrors—left and right-hand mirror
 - Lighted voice vanity mirror—passenger side
 - Uplighted voice vanity mirror (GT)
 - Delco AM radio
 - Delco AM/FM radio
 - Delco FM stereo radio
 - Delco FM stereo radio with AM/FM stereo radio
 - Delco B track tape player with AM/FM stereo radio
 - Delco cassette tape player with AM/FM stereo radio
 - Delco cassette tape player with FM/AM stereo radio
 - Delco 6-cyl. with AM/FM stereo radio and 6-disc power antenna
 - Delco four-disc speakers
 - Windshield antenna
 - Automatic power antenna
 - Fixed mast antenna
 - Automatic 6-disc power antenna
 - Lockable storage compartments
 - Air deflector
 - Luggage rack
 - Crash-Master speed control with remote feature
 - Tilt steering column
 - Custom steering wheel
 - Spot steering wheel
 - Power windows (includes rear view mirror)
 - Power windows (front doors only)
 - 2-speed windshield wiper with low-speed delay
 - Language halogen, high-beam headlamps
- Appearance and Protection**
- Color-coordinated custom front and rear seat belts and front shoulder belts (all with 5x45 seats or bucket seats)
 - Front carpet covers
 - Carpet covers and hand mats
 - Front and rear carpet covers with inserts
 - Lead floor area carpet (all, in Estate Wagon)
 - Door edge guards
 - Protective body side moldings
 - Rocker panel moldings
 - Woodgrain vinyl applique
 - Wood-grain vinyl applique (Century)
 - Interior molding package includes light window moldings and door and window frame deck panel treatment (Century)
 - Interior molding package includes valve rocker panel and belt restraint molding
 - Designery Accent Panel
 - Tailgate follow-up board (all, in Estate Wagon)
 - Body side strips
 - Chrome-plated steel wheels (4)
 - Deluxe wheel covers
 - Custom locking wire wheel covers
 - Styled aluminum wheels (4)
 - Turbo wheels (4)
- Model selection**
- Engine choice**
- Be sure to consider**
- Automatic level control
 - Automatic air conditioner
 - Crash-Master speed control with remote feature
 - Tilt steering column
 - Power windows
 - Adjustable roof rack
 - Delco 6-cyl. and AM/FM stereo radio with 6-disc power antenna
 - Protective body side moldings
 - Styled aluminum wheels (4)
 - Language halogen, high-beam headlamps
- Additional selections**

EXTERIOR COLORS 1981



BULICK

1981 BUICK EXTERIOR COLORS

Available on all models

 White • Code 11	 Silver* • Code 16	 Black • Code 19	 Light Blue* • Code 21	 Dark Blue* • Code 29
 Light Sandstone • Code 63	 Medium Sandstone* • Code 68	 Dark Sandstone* • Code 69	 Dark Maple* • Code 77	 Light Waxberry • Code 35

Available on all models except Skylark and Riviera

 Light Waxberry • Code 35	 Dark Waxberry*	 Medium Blue* • Code 22
---	---	---

Available on Riviera models only

 Beige • Code 59	 Camel* • Code 34
---	--

Additional Designers' Accent Color

 Dark Waxberry*	 Medium Blue* • Code 22
---	---

Available on all models except Skylark

 Light Jadestone* • Code 45	 Dark Jadestone* • Code 47	 Light Maple* • Code 72	 Medium Waxberry • Code 36
--	---	--	--

Available on Electra and Riviera models only (extra cost)

 Slate Firemist* • Code 85	 Silver Fawn Firemist* • Code 83	 Dark Jadestone Firemist* • Code 49
---	---	--

Available on Skylark models only

 Dark Green* • Code 48	 Yellow • Code 51	 Orange* • Code 58	 Red • Code 75
--	---	--	--

Ask your Buick salesperson about selected standard car colors that are also used as Accent Colors.

*Metallic Paint

VINYL TOPS (Available at extra cost on all models except Station Wagons. Riviera TYPE and Skylark Sport vinyl tops are available only when matching lower car color is ordered.)

 White • Code 11	 Black • Code 19	 Dark Blue • Code 29
 Medium Waxberry • Code 36 (not available on Riviera)	 Light Jadestone • Code 45 (not available on Skylark)	 Light Sandstone • Code 63
 Doeskin • Code 64 (available on Skylark and Riviera only)	 Dark Maple • Code 77	 Slate • Code 85 (available on Riviera only)

ACCENT STRIPES (Stripes standard on Century Limited Sedan and available on all other models except LeSabre Estate Wagon and Electra Estate Wagon or when Designers' Accent Paint Treatment is ordered.)

	White • Code 11A (all series)
	Silver • Code 15A (all series)
	Black • Code 19A (all series)
	Dark Blue • Code 29A (all series)
	Light Jadestone • Code 45A (all series except Skylark)
	Gold • Code 53A (Skylark only) • Code 65A (all other series)
	Light Sandstone • Code 63A (all series)
	Red • Code 73A (all series)
	Dark Maple • Code 77A (all series)
	Slate • Code 85A (Riviera only)

DESIGNERS' ACCENT COLOR COMBINATIONS

Skylark Designers' Accent Colors (Code D84)



Century Designers' Accent Colors (Code D57) available on Century Sedan. Code D84 available on Station Wagons



Regal Designers' Accent Colors (Code D84)



Regal, Regal Limited Decor Package Colors (Code Y52) available on Regal Coupe and Regal Limited Coupe models. Includes special Designers' Accent Paint, Turbine wheels (4), sport mirrors and sport steering wheel.



Regal Sport Coupe Decor Package Colors (Code Y44) available on Regal Sport Coupe model. Includes special Designers' Accent Paint, black headlamp trim, black tail lamp trim, black painted grille, Turbine wheels (4), wide bright center rocker panel moldings and sport steering wheel.



LeSabre Designers' Accent Colors (Code D84) Available on LeSabre and LeSabre Limited Models



Riviera Designers' Accent Colors (Code D84)



Buick Motor Division, General Motors Corporation, reserves the right to make changes at any time, without notice, in prices, colors, materials, equipment, specifications and models; and also to discontinue models.